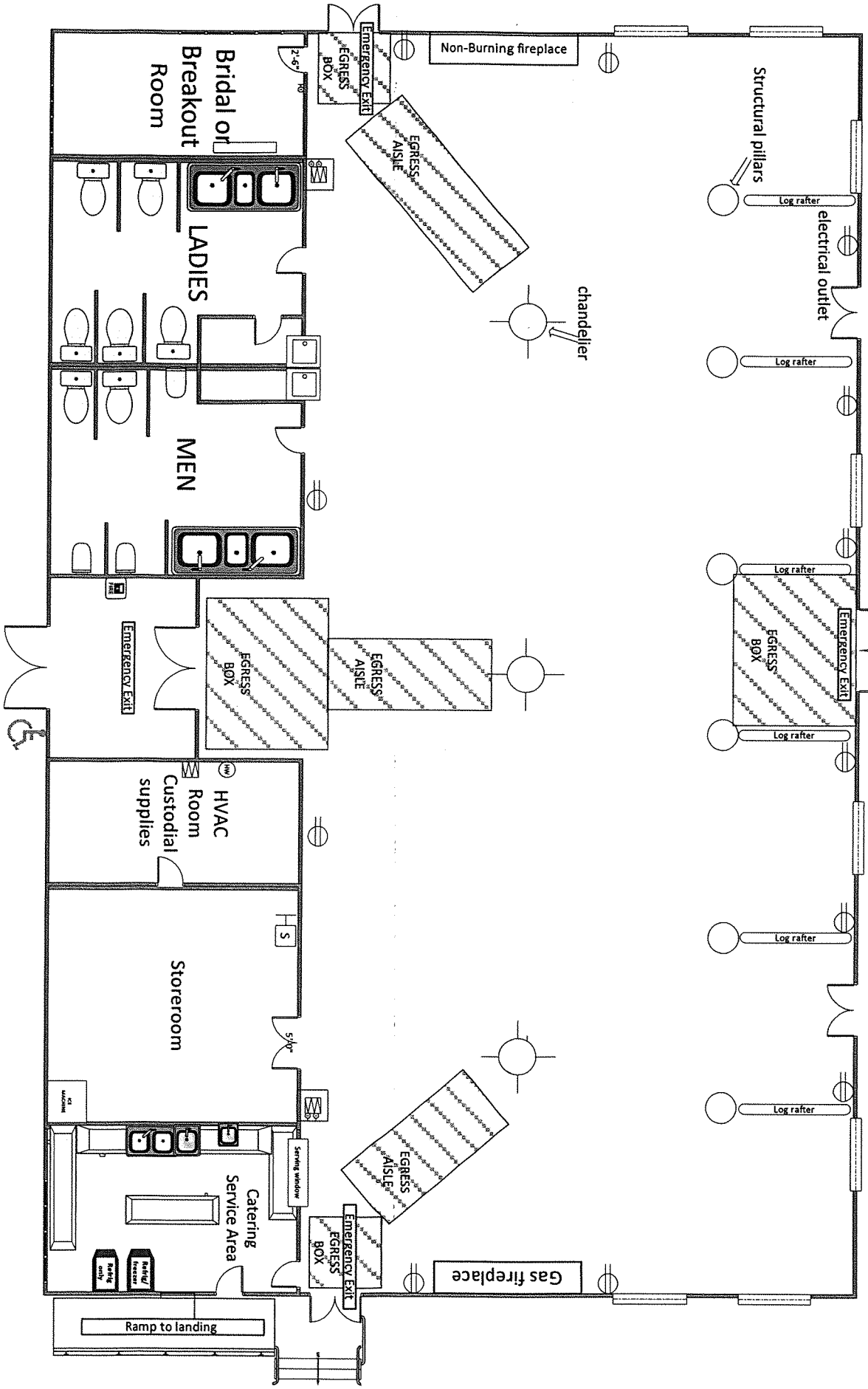


EAGLE POINT LODGE

4101 N. 3RD STREET

J:\Apps\Worddocs\Rec Div Facility Usage\Park Maps\Visio trail 2016 to pdf



Notes about the facility:

1. Total length is 100 feet, Total width is 72 feet
2. West bay is 18 feet wide, East bay is 18 feet wide, Center bay is 36 feet wide
3. Fireplaces are 10½ feet wide, Window widths are approx. 74", 94" or 124"
4. All electrical circuits are 20 amp. All lights are dimmable LED's
5. Emergency Exits on the north, south and west sides of the building must remain open as "Emergency Egress areas 6 ft by 6 ft in front of each door, AND have a 25 foot long by 4 foot wide "Corridor" to each door